



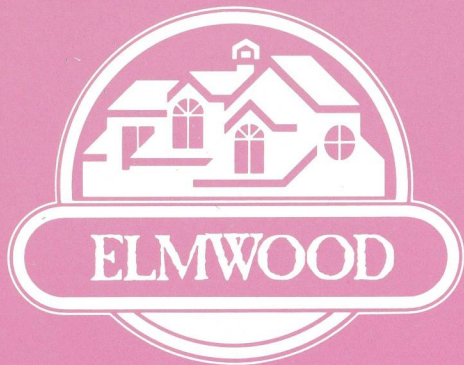
**T**ake the best of Southern California's traditional indoor/outdoor lifestyle. Add the excitement of today's most advanced design techniques with a tempting variety of impressively open, beautifully livable interior arrangements. Top it off with the pure convenience of town-home living and you have Laurelmont—highly sophisticated, two- and three-bedroom townhomes in the beautiful, rolling hillsides of Laguna Hills.

Laurelmont is a unique expression of the best of tradition and the best of today; a



delightful blending of lifestyle and convenience in up-to-date surroundings. It is great expanses of glass, including dramatic clerestory and half-round windows to bathe rooms in lots of bright, natural light. Plus imaginative angles and level changes to define, enhance and add extra dimensions of excitement to traditionally comfortable, highly functional living spaces.

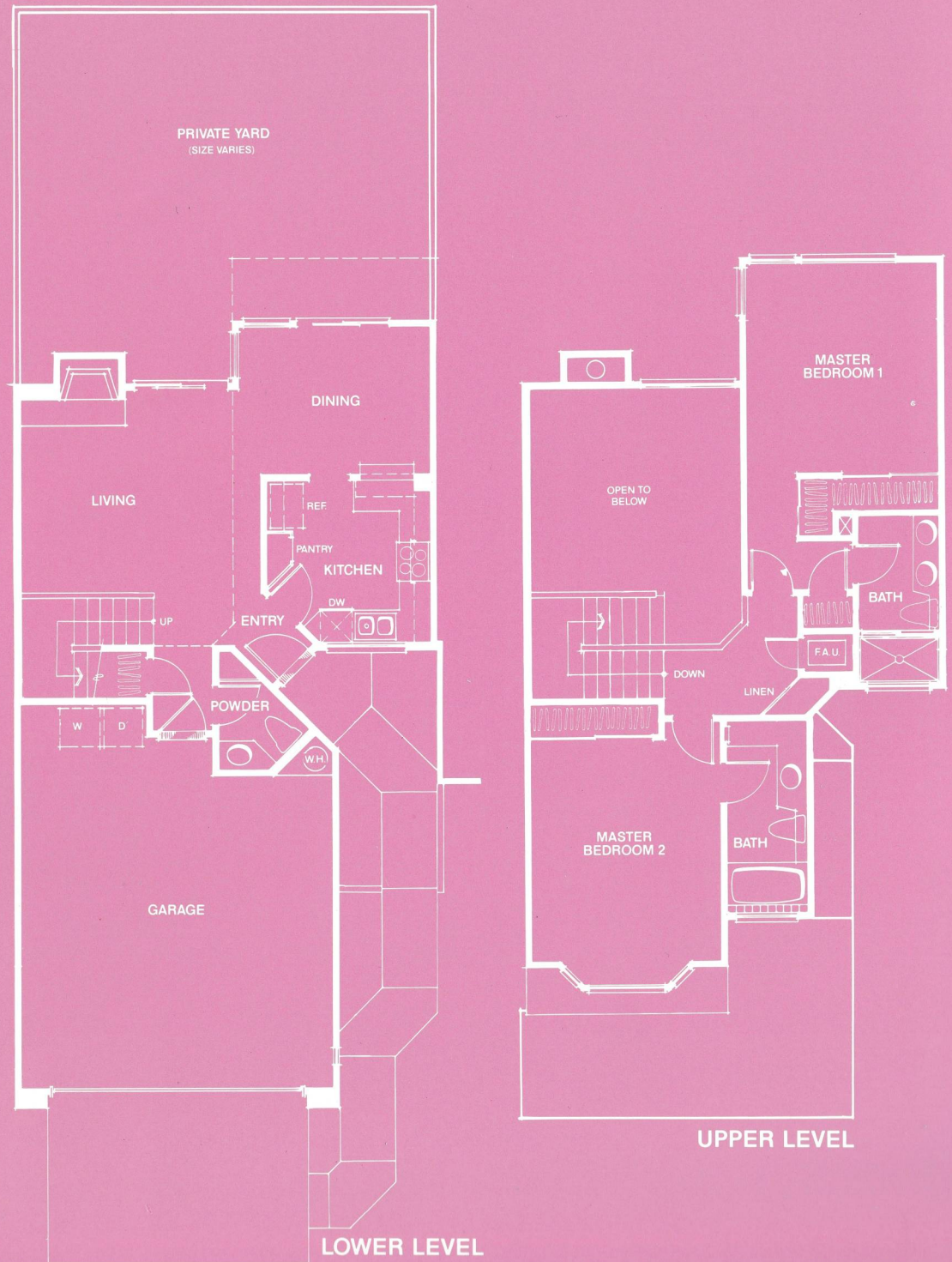
Laurelmont. Traditional Southern California living. And much more.

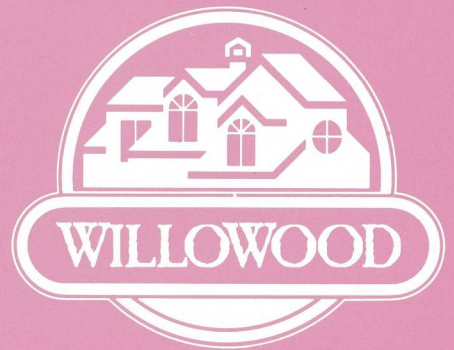


PLAN 1

2 bedrooms, 2½ baths  
1,297 square feet

Dual master bedroom suites highlight this distinctive home. A wood-burning fireplace warmly accents the living room, which is further enhanced by an impressive two-story-high ceiling. The dining room overlooks a private garden/yard area and joins with the spacious kitchen and living room to create a flowing downstairs design that's great for entertaining and the perfect counterpoint to the privacy of the two master bedroom suites upstairs.

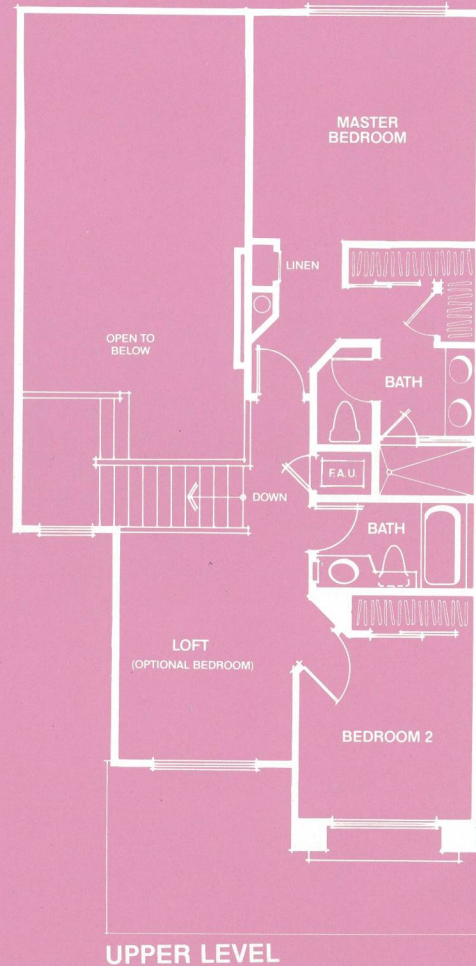
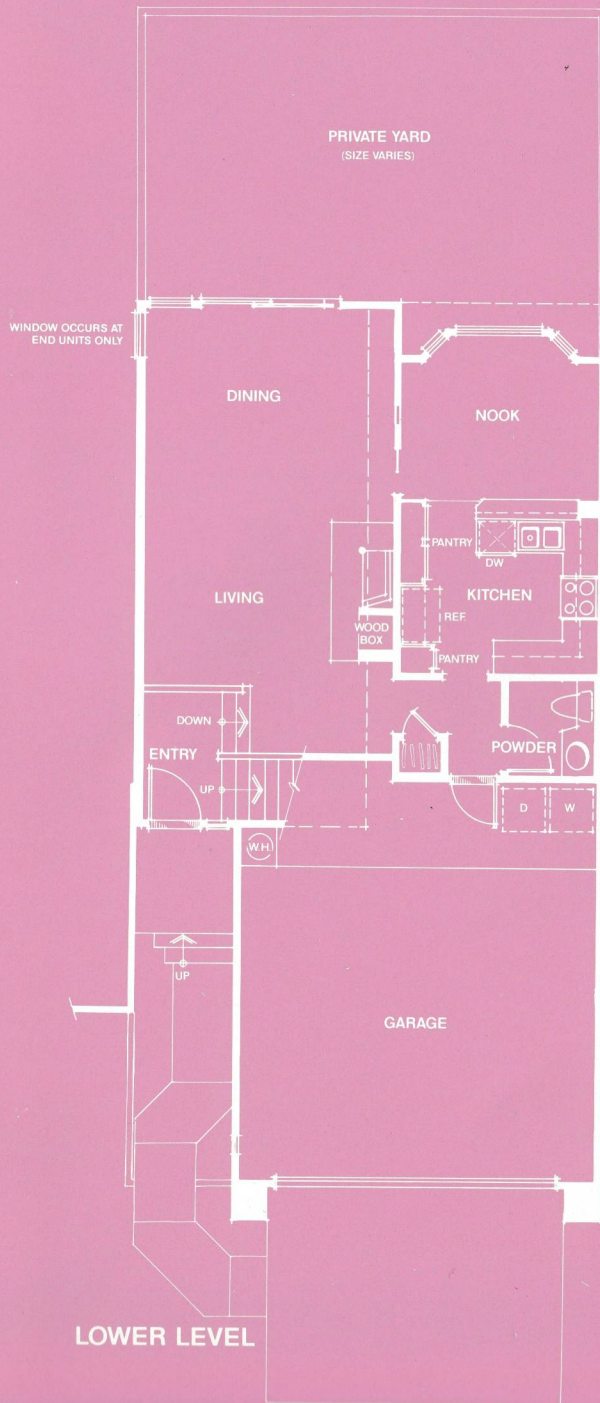


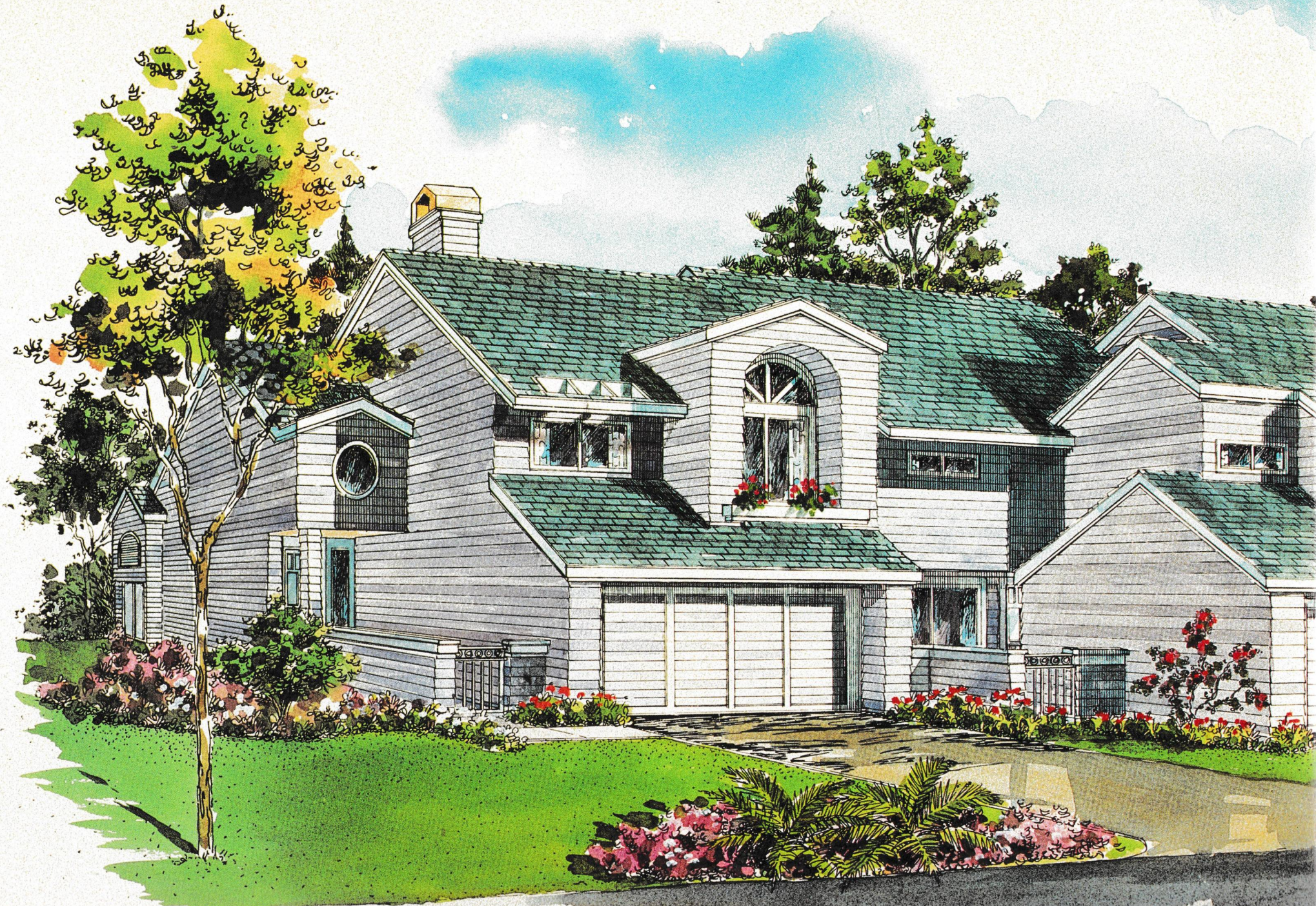


PLAN 2

2 bedrooms plus loft  
 2½ baths  
 1,451 square feet

A spacious loft (optional third bedroom) is among the refinements of this sophisticated design. Dramatic two-story volume ceilings highlight the formal living and dining areas, which share the warmth and cheer of a wood-burning fireplace. The beautifully open kitchen, with abundant storage space including two pantries—one double-wide—joins a room sized nook with charming bay window. Upstairs is the impressive master suite, with spacious, compartmentalized bath.





SPAR

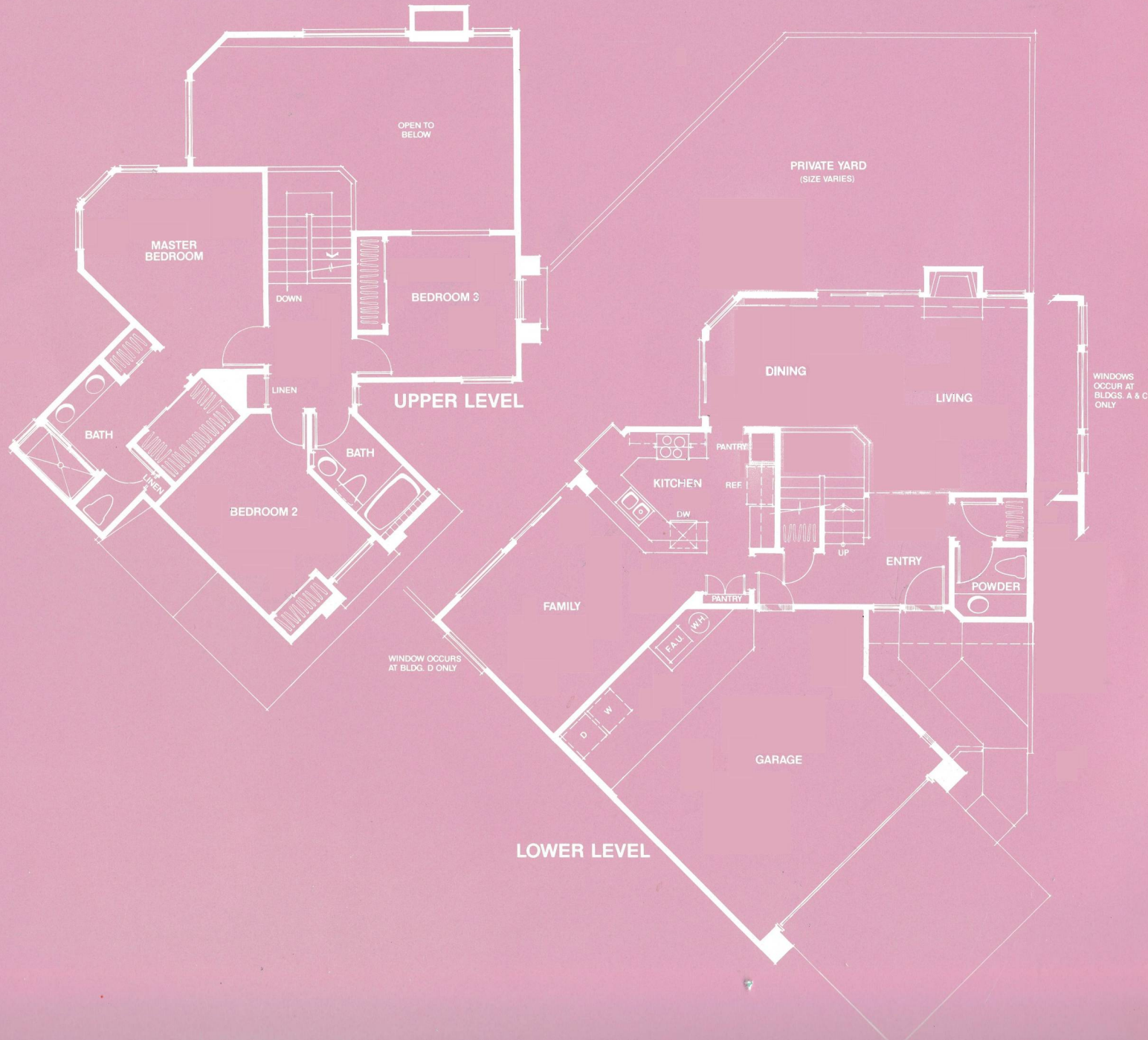




PLAN 3

3 bedrooms, 2½ baths  
1,716 square feet

An expansive entry leading to all areas of the spacious downstairs sets an impressive tone in this imaginatively designed home. The large family room joins with an unusually open kitchen design, effectively combining both rooms into one very comfortable center for informal living. "Dressier" occasions will be beautifully accommodated by the dining room and main living room, with fireplace. On the upstairs level are three bedrooms, including the luxurious master suite with two separate closets—one walk-in—and spacious compartmentalized bath.





Laurelmont is built and backed by Mission Viejo Company, builder and developer of the nationally acclaimed 10,000-acre planned community of Mission Viejo. Organized in 1963 to initiate large scale development on a portion of the historic Rancho Mission Viejo, the company has built more than 20,000 homes in planned communities in California and Colorado.

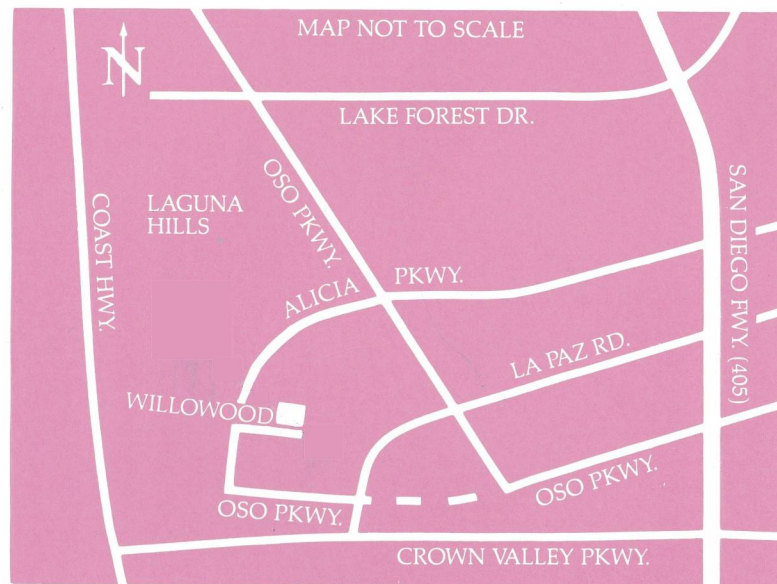
The product of years of homebuilding experience can be seen in nearby Mission Viejo where the company has produced a variety of homes of quality and distinction in carefully-planned neighborhoods.

Mission Viejo Company homes meet the emerging needs of today's discriminating homebuyers, and form integral parts of neighborhoods planned to develop the sense of belonging that alone turns a new house into a family's home.

This same excellence is available today, here at Laurelmont in Laguna Hills.







84 Willowood  
Laguna Hills, Ca. 92656  
(714) 643-3408